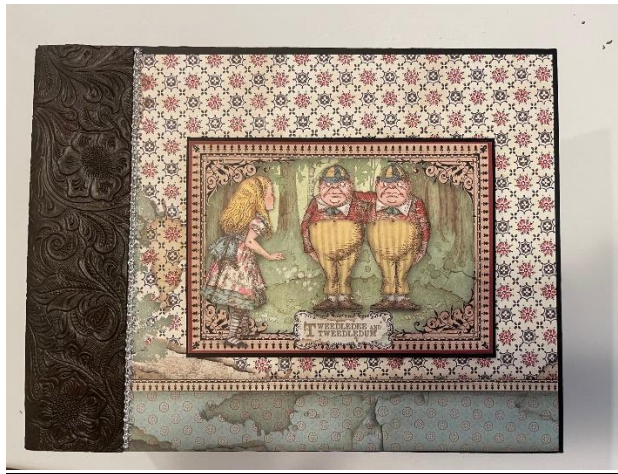


**Stamperia Alice Through
The Looking Glass
Large Album**
By
Shellie Geigle
[J&S Hobbies and Crafts](#)

MATERIALS AND PRECUTTING GUIDE



Materials

3 [Alice Through the Looking Glass 12 x 12 Paper Packs](#)

3 sheets of [Black 12 x 12 Cardstock \(for album wrap\)](#)

1 pack of [Bazzil 8-1/2 x 11 heavyweight black Cardstock](#) (for pages/hinges,pockets, etc)

1 piece of [Specialty Embossed Vinyl \(Black or Brown\)](#)

2 sheets of [Medium Weight Chipboard 12 x 12 size](#)

2 packs [Magnets \(you will have left overs\)](#)

1 each of [1/4"](#) and [3/8"](#) Scor Tape

[Tyvek](#)

[Art Glitter Glue - dries clear](#) and also the [Metal Tip](#)

[Beacon Fabri Tack](#)

PRECUTTING AND SCORING GUIDE

**** Please label your pieces lightly with pencil****

****We will review all precuts in tutorial****

****The precuts are only for chipboard, Tyvek, and black cardstock. We cut our designer paper in the video together****

BASE ALBUM

Chipboard:

Qty:

- 2 8-1/2" x 11" Chipboard pieces. Label: Cover
- 1 3-1/2" x 8-1/2" piece. Label: Spine

Tyvek:

- 2 1" x 8-1/2" pieces.

Cut your three sheets of 12 x 12 Cardstock as follows:

- 2 10-1/2" x 12" pieces. Label: Album Wrap
- 1 5-1/2 x 10-1/2" piece. Label: Album Wrap

Note: The rest of your cuts in this tutorial will be made on your black 8-1/2 x 11" cardstock:

- 1 6" x 8-1/4" piece. Label: Inside Spine Cover
- 2 8-1/4 x 10-5/8" piece. Label" Inside Covers
- 6 8-1/4 x 11" pieces.
Scoring: Lay your piece so it's 11" across your scoring board. Score at 1/2".
Label: Inner Pages.

DECORATING THE OUTSIDE

- 1 6-1/2 x 9-1/4" piece.
Scoring: Lay your paper so it's 9-1/4" across your board. Score at 4-5/8".
Label: Outside Folder

PAGE 1

- 1 3-5/8" x 11" piece.
Scoring: Lay our paper so it's 3-5/8" across your board. Score at 1/2". Now turn your paper so it's 11" across and score at 1/2" and 10-1/2".
Label: Pg 1 Pocket

- 2 5 x 8-1/2" pieces.
Scoring: lay your paper so it's 8-1/2" across. Score at 1/2" and 5/8".
Label: Pg 1 Flip

- 1 1-3/4 x 7-1/4" piece.
Scoring: Lay your paper so it's 7-1/4" across. Score at 1/2" and 5/8".
Label: Pg 1 Left Strap.

- 1 1-3/4" x 6" piece.
Scoring: Lay your paper so it's 6" across. Score at 1/2" and 5/8".
Label: Pg 1 Right Strap.

PAGE 2

- 2 3-3/4" x 6" pieces.
Scoring: Lay your paper so it's 3-3/4" across. Score at 1/2". Turn your paper so it's 6" across – Score at 1/2" and 5-1/2".
Label: Pg 2 Pocket

- 1 3-1/4 x 9" piece.
Scoring: Lay your paper so it's 9" across. Score at 4-1/2".
Label: Pg 2 Folder

PAGE 3

- 1 8 x 9-1/4" piece.
Scoring: Lay your paper so it's 9-1/4" across. Score at 1/2" and 5/8".
Label: Pg 3 Left Fold Out

- 1 5-1/8 x 6-5/8" piece.
Scoring: Lay our paper so it's 5-1/8" across. Score at 1/2".
Label: Pg 3 Front Flip

- 1 7-5/8 x 8" piece.
Scoring: Lay your paper so it's 7-5/8" across. Score at 1/2" and 5/8".
Label: Pg 3 Right Fold Out

- 1 2-1/2 x 9" piece.
Scoring: Lay your paper so it's 2-1/2" across. Score at 1/2". Turn your paper so it's 9" across and Score at 1/2" and 8-1/2".
Label: Pg 3 Side Pocket
- 1 3-5/8 x 4-5/8" piece. Label: Pic Mat

PAGE 4

- 2 4-1/4 x 6-1/8" piece.
Scoring: Lay your paper so it's 6-1/8" across. Score at 1/2" and 5/8".
Label: Pg 4 Inner FO
- 1 4 x 10-1/8" piece.
Scoring: lay your paper so it's 4" across and score at 1/2" and 3/4".
Label: Pg 4 Bottom Flip
- 1 8 x 10-1/8" piece.
Scoring: Lay your paper so it's 8" across. Score at 1/2" and 3/4".
Label: Pg 4 Top Flip
- 1 3-1/2 x 11" piece.
Scoring: Lay your paper so it's 3-1/2" across. Score at 1/2". Turn your paper so it's 11" across and score at 1/2" and 10-1/2".
Label: Pg 4 Bottom Flip Pocket
- 2 2-1/2 x 5-1/4" pieces. Label: Pg 4 Top Flip Tuck.

PAGE 5

- 1 7 x 11" piece.
Scoring: Lay your paper so it's 7" across. Score at 1/2". Turn your paper so it's 11" across and score at 1/2" and 10-1/2".
Label: Pg 5 Back Pocket
- 1 4-1/2 x 11" piece.
Scoring: Lay your paper so it's 4-1/2" across and score at 1/2". Turn your paper so it's 11" across and score at 1/2" and 10-1/2".
Label: Pg 5 Top Pocket.
- 1 3-5/8 x 5" piece.
Scoring: Lay your paper so it's 3-5/8" across. Score at 1/2". Turn your paper so it's 5" across and Score at 1/2" and 4-1/2".
Label: Pg 5 Side Pocket.

PAGE 6

- 6 4-1/4" x 5-3/4" pieces.
Scoring: Lay your paper so it's 5-3/4" across. Score at 1/2".
Label Only One: Pg 6 Waterfall.
- 1 1-3/4 x 7-3/4" piece.
Scoring: Lay your paper so it's 7-3/4" across. Score at 1/2" and 5/8".
Label: Pg 6 Strap.

PAGE 7

- 1 4-1/4 x 11" piece.
Scoring: Lay your paper so it's 4-1/4" across. Score at 1/2". Turn your paper so it's 11" across and score at 1/2" and 10-1/2".
Label: Pg 7 Pocket
- 1 3-7/8 x 6" piece.
Scoring: Lay your paper so it's 6" across. Score at 2-5/8".
Label: Pg 7 Offset Folder.

PAGE 8

- 2 5-5/8 x 8" pieces.
Scoring: Lay your paper so it's 5-5/8" across. Score at 1/2" and 5/8".
Label: Pg 8 Fold Out
- 2 4-1/2 x 5-3/4" pieces.
Scoring: Lay your paper so it's 4-1/2" across. Score at 1/2". Turn your paper so it's 5-3/4" across and score at 1/2" and 5-1/4".
Label: Pg 8 Pocket

PAGE 9 and 10

There are no precuts

PAGE 11 AND 12

- 2 5-1/2 x 9" pieces.
Scoring: Lay your paper so it's 5-1/2" across and score at 1/2". Turn your paper so it's 9" across and score at 1/2" and 8-1/2".
Label: Pg 11 & 12 Side Pocket
- 2 4-5/8 x 6" pieces.
Scoring: Lay your paper so it's 4-5/8" across. Score at 1/2". Turn your paper so it's 6" across and score at 1/2" and 5-1/2".
Label: Pg 11 & 12 Pocket

PAGE 13

There are No precuts

PAGE 14

1 5-1/2 x 11" piece.

Scoring: Lay your paper so it's 5-1/2" across. Score at 1/2". Turn your paper so it's 11" across and score at 1/2" and 10-1/2".

Label: Pg 14 Large Pocket

2 3-7/8 x 6" pieces.

Scoring: Lay your paper so it's 3-7/8" across. Score at 1/2". Turn your paper so it's 6" across and score at 1/2" and 5-1/2".

Label: Pg 14 Small Pocket